

# Hangings of the Greens



BETHANY LUTHERAN CHURCH (ELCA)  
December 1, 2024  
First Sunday of Advent

**PRELUDE**  
**LIGHTING OF CANDLES**  
**RINGING OF THE BELL**  
**WELCOME**

*The gathered people of God stand and respond with the bold printed text.*

**CALL TO WORSHIP (Jeremiah 33:14-15)**

The days are coming, declares the Lord, when I will fulfill the gracious promise I made to the house of Israel, and to the house of Judah. In those days and at that time I will make a righteous branch sprout from David's line. He will do what is just and right in the land.

**RESPONSIVE READING (Isaiah 11:1-6, 10)**

A shoot will come from the stump of Jesse, from his branch will bear fruit.

**The Spirit of the Lord will rest on him - the Spirit of wisdom and of understanding, the Spirit of counsel and of power, the Spirit of knowledge and of fear of the Lord.**

And he will delight in the fear of the Lord. He will not judge by what he sees with his eyes, or decide by what he hears with his ears;

**but with righteousness he will judge the needy, with justice he will give decisions for the poor of the earth. He will strike the earth with the rod of his mouth; with the breath of his lips, he will slay the wicked.**

Righteousness will be his belt and faithfulness the sash around his waist.

**The wolf will live with the lamb, the leopard will lie down with the goat, the calf and the lion and the yearling together, and a little child will lead them.**

In that day that the root of Jesse will stand as a banner for the peoples; the nations will rally to him, and his place of rest will be glorious.

**HYMN *Prepare the Royal Highway* (ELW 264)**



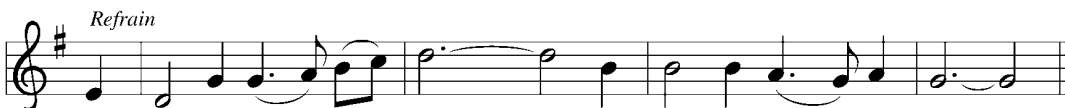
- 1 Pre - pare the roy - al high - way; the King of kings is near!
- 2 God's peo - ple, see him com - ing: your own e - ter - nal king!
- 3 Then fling the gates wide o - pen to greet your prom - ised king!
- 4 His is no earth - ly king - dom; it comes from heav'n a - bove.



Let ev - 'ry hill and val - ley a lev - el road ap - pear!  
Palm branch - es strew be - fore him! Spread gar - ments! Shout and sing!  
Your king, yet ev - 'ry na - tion its trib - ute too may bring.  
His rule is peace and free - dom and jus - tice, truth, and love.



Then greet the King of glo - ry, fore - told in sa - cred sto - ry:  
God's prom - ise will not fail you! No more shall doubt as - sail you!  
All lands will bow be - fore him; their voic - es join your sing - ing:  
So let your praise be sound - ing for kind - ness so a - bound - ing:



Ho - san - na to the Lord, for he ful - fills God's word!

*The people of God sit.*

## The Meaning of Advent

Advent is a time of preparation, a time of penance, and a time of waiting. As we make ready for Christ's coming, we prepare our homes with the symbols of Christmas, and we prepare our hearts by opening them to God's promise and by showing our repentance. Then, in anticipation, we wait, focusing our homes and hearts on God's greatest gift to the world - His son, born as a tiny babe in a humble manger in Bethlehem. "For to us a child is born, to us a son is given, and the government will be on his shoulders. And he will be called the Wonderful Counselor, Mighty God, Everlasting Father, Prince of Peace." (Isaiah 9:6)

Let us pray.

Heavenly Father, as we decorate this place of worship, adorn our hearts and minds with your love and peace. Help us focus with joy on the true meaning of Christmas. Clothed in your bountiful grace and love use us to spread the hope, peace, and joy of this season and witness to the world your gift of salvation through the birth of your Son, Jesus Christ, our Lord.

**Amen.**

### HYMN *Come Thou Long Expected Jesus* (ELW 254)



1 Come, thou long-ex - pect-ed Je - sus, born to set thy peo - ple free;  
2 Born thy peo - ple to de - liv - er, born a child, and yet a king;



from our fears and sins re - lease us; let us find our rest in thee.  
born to reign in us for - ev - er, now thy gra - cious king - dom bring.



Is - rael's strength and con - so - la - tion, hope of all the earth thou art,  
By thine own e - ter - nal Spir - it rule in all our hearts a - lone;



dear de - sire of ev - 'ry na - tion, joy of ev - 'ry long - ing heart.  
by thine all - suf - fi - cient mer - it raise us to thy glo - rious throne.

## The Advent Wreath

### SCRIPTURE READING: Isaiah 9:2

The people who walked in darkness have seen a great light; those who lived in a land of deep darkness - on them light has shined.

The origin of the burning wreath is found in the traditions of Pre-Christian Germanic people who burned the greens in the hope of spring following a long winter. In the sixteenth century throughout Germany, the Advent wreath became a traditional symbol for many Christians. The circle of evergreens, having no end and bearing four candles, reminds us of the eternal Christ, the light of the world. Christians use the wreath as a sign that Christ reaches into our time to lead us to the light of everlasting life. Each Sunday in Advent a new candle is lit until all four glow on the fourth Sunday.

The three blue candles and single pink candle represent the four weeks of Advent leading up to Christmas. On the first Sunday of Advent, one blue candle is lit and represents hope, reminding us of God's promise that Christ is our hope and our salvation. On the second Sunday of Advent, a second blue candle is lit and symbolizes peace, reminding us that Jesus is the "Prince of Peace." On the third Sunday of Advent, the pink candle is lit and represents joy, reminding us of the angel's message "Do not be afraid. I bring you good news of great joy that will be for all people. Today in the town of David a Savior has been born to you, he is Christ the Lord." (Luke 2:10-11) On the fourth Sunday of Advent, the final blue candle is lit and symbolizes love, reminding us, "For God so loved the world that he gave his one and only Son, that whoever believes in him shall not perish but have eternal life." (John 3:16) Then on Christmas Eve, as the people of God gather to rejoice and give thanks for the birth of our Savior, the white candle is lit. This candle represents the true light, Jesus Christ, which has come into the world.

*The first blue candle is lighted.*

**HYMN *Light One Candle to Watch for Messiah* (ELW 240, v.1 sung twice)**



1 Light one can-dle to watch for Mes-si - ah: let the light ban-ish dark - ness.  
 2 Light two can-dles to watch for Mes-si - ah: let the light ban-ish dark - ness.  
 3 Light three can-dles to watch for Mes-si - ah: let the light ban-ish dark - ness.  
 4 Light four can-dles to watch for Mes-si - ah: let the light ban-ish dark - ness.



He shall bring sal - va - tion to Is - ra - el, God ful - fills the prom - ise.  
 He shall feed the flock like a shep-herd, gent - ly lead them home-ward.  
 Lift your heads and lift high the gate-way for the King of glo - ry.  
 He is com - ing, tell the glad tid - ings. Let your lights be shin - ing!

**Evergreens**

**SCRIPTURE READING: Psalm 92:12-15**

<sup>12</sup>The righteous flourish like the palm tree,  
 and grow like a cedar in Lebanon.

<sup>13</sup>**They are planted in the house of the LORD;  
 they flourish in the courts of our God.**

<sup>14</sup>In old age they still produce fruit;  
 they are always green and full of sap,

<sup>15</sup>**showing that the LORD is upright;  
 he is my rock, and there is no unrighteousness in him.**

*The lights on the greenery are turned on.*

Hanging greenery goes back to ancient Rome. Evergreen roping and wreaths were hung in homes and on buildings as a sign of victory. Evergreens include not only fir, cedar, and pine but also ivy, holly, and rosemary. Christians continued to follow the practice of hanging greens as a symbol of Jesus's victory over death. Evergreens offer a variety of symbols and traditions. Holly has become a sign of Christ's passion. The prickly leaves suggest the crown of thorns and the red berries, the blood that Jesus shed for our sin. A legend says that the rosemary shrub is fragrant because Mary laid the Christ child's garments on its branches. In the Middle Ages, rosemary was spread on the floor of homes at Christmas, and as people walked on it a pleasant aroma filled the air.

The Evergreen also serves as a symbol of eternal life - always green, always fresh, and alive, everlasting. Thus, the Evergreen is a symbol of the eternal promise of salvation through the everlasting God. The hanging of the greens has become a tradition of preparation for Christmas.

### HYMN *Savior of the Nations Come* (ELW 263)



1 Sav - ior of the na - tions, come; vir - gin's son, make here your home.  
2 Not by hu - man flesh and blood, but the mys - tic Breath of God,  
3 Won - drous birth—oh, won - drous child—from his throne, a vir - gin mild!  
4 From God's heart the Sav - ior speeds, back to God his path - way leads;



Mar - vel now, O heav'n and earth: God has cho - sen such a birth.  
was the Word of God made flesh, fruit of wom - an, blos - som fresh.  
Ver - y God, and Mar - y's son, ea - ger now his race to run!  
out to van - quish death's com - mand, back to reign at God's right hand.

## Poinsettias

### SCRIPTURE READING: Isaiah 60:1-2

<sup>1</sup>Arise, shine; for your light has come, and the glory of the Lord has risen upon you. <sup>2</sup>For darkness shall cover the earth, and thick darkness the peoples, but the Lord will rise upon you, and his glory will appear over you.

*Two poinsettias are placed upon the altar.*

The poinsettia is known in Central America as the "Flower of the Holy Night." This blossom is a newer Christmas tradition beginning in the early nineteenth century when Dr. Joel Poinsett, our first ambassador to Mexico, introduced it to the United States. Its star shape reminds us of the Bethlehem star. Two legends have evolved from this flower. The first explains its origin. A little boy having nothing to give baby Jesus, prayed and as he did, the flower grew at his feet. He picked the blossom and gave it to the Christ child. The second legend tells us that the poinsettia was white representing the purity of Christ, but when Jesus died on the cross, the blossom changed to blood red. So, the star-shaped poinsettia reminds us of the holy night pointing us toward Good Friday.

## The Christmas Tree, Star & Chrismons

### SCRIPTURE READINGS

<sup>3</sup>Christ redeemed us from the curse of the law by becoming a curse for us — for it is written, "Cursed is everyone who hangs on a tree" — *Galatians 3:13*

<sup>5</sup>But he was wounded for our transgressions, crushed for our iniquities; upon him was the punishment that made us whole, and by his bruises we are healed. — *Isaiah 53:5*

<sup>1</sup>In the time of King Herod, after Jesus was born in Bethlehem of Judea, wise men from the East came to Jerusalem, <sup>2</sup>asking, "Where is the child who has been born King of the Jews? For we observed his star at its rising, and have come to pay him homage." — *Matthew 2:1-2*

*Chrismons are placed on the tree during the reading and hymn below. The lights on the tree are turned on; however, the star will remain unlit until Christmas Eve when we celebrate the birth of the true Light of the world.*

In ancient times, trees and all nature were held in great reverence as a symbol of rebirth. During the season of Yule, trees were brought indoors and decorated as part of pagan worship. Because of this, trees were banned in many Christian churches until the church leaders studied the words of Isaiah 60:13, "The glory of Lebanon will come to you, the pine, the fir and the cypress all together, to adorn the place of my sanctuary; and I will glorify the place of my feet."

A story is told of Martin Luther who was inspired by the beauty of an evergreen tree lit by the stars on Christmas Eve. He cut down the tree, brought it home, and lit the limbs with candles to simulate the stars in the sky above Bethlehem.

In the late Middle Ages, glass bulbs and the Bethlehem star were added. The Christmas tree also reminds us of the tree on which Christ was crucified. It serves as a wonderful symbol of our salvation and forgiveness through Jesus.

The star serves as a symbol of Christmas in many ways. First, we remember the star of Bethlehem and the wise men who followed the star to find the Christ child as Matthew 2:2 states, "For we observed his star at its rising, and have come to pay him homage." The Bible, in Revelations 22:16, also refers to Jesus as the morning star. "I Jesus have sent my angel to give you this testimony for the churches. I am the root and the offspring of David, and the bright Morning Star." As well, the starlight is universal, its rays are seen everywhere, and so stars have become the symbol of peace throughout the world.

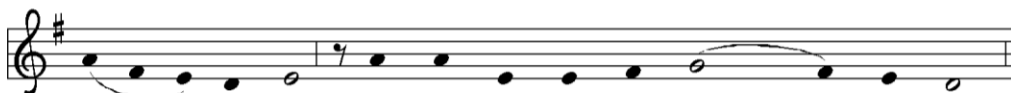
These Chrismons are special Christ-centered ornaments and are the symbol of Christ's birth, life, death, and resurrection. The ornaments are white and gold to symbolize the purity of Christ and his kinship. These Chrismons have been lovingly, hand crafted by our own Bethany members.

*The people of God stand.*

**HYMN O Come, O Come Emmanuel (ELW 257)**



1 O come, O come, Em - man - u - el, and ran - som cap - tive  
 2 O come, O Wis - dom from on high, em - brac - ing all things  
 3 O come, O come, O Lord of might, as to your tribes on  
 4 O come, O Branch of Jes - se, free your own from Sa - tan's



Is - ra - el, that mourns in lone - ly ex - ile here  
 far and nigh: in strength and beau - ty come and stay;  
 Si - nai's height in an - cient times you gave the law  
 tyr - an - ny; from depths of hell your peo - ple save,



un - til the Son of God ap - pear.  
 teach us your will and guide our way. Re-joyce! Re-joyce!  
 in cloud, and maj - es - ty, and awe.  
 and give them vic - t'ry o'er the grave.



Em - man - u - el shall come to you, O Is - ra - el.

## PRAYERS OF INTERCESSION

With the whole people of God in Christ Jesus, let us pray for the church, those in need, and all of God's creation.

*Each petition ends with, "Lord, in your mercy" and the people of God sing "O Lord, Hear My Prayer" (ELW 751).*

The image shows a musical score for two systems of music. Each system consists of a vocal line (treble clef) and a piano accompaniment line (bass clef). The key signature is one sharp (F#). The first system of music is followed by the lyrics: "O Lord, hear my prayer, O Lord, hear my prayer: when I call, an - swer me. OR The Lord is my song, the Lord is my praise: all my hope comes from God." The second system of music is followed by the lyrics: "O Lord, hear my prayer, O Lord, hear my prayer: come and lis - ten to me. The Lord is my song, the Lord is my praise: God, the well-spring of life." The piano accompaniment features a steady bass line and chords that support the vocal melody.

Text: Psalm 102:1-2; Taizé Community, adapt.  
Music: HEAR MY PRAYER, Jacques Berthier, 1923-1994  
Text and music © 1982, 1991 Les Presses de Taizé, GIA Publications, Inc., agent, 7404 S. Mason Ave., Chicago, IL 60638.  
www.giamusic.com. 800.442.3358. All rights reserved. Used by permission.

Duplication in any form prohibited without permission or valid license from copyright administrator.

Into your hands, gracious God, we commend all for whom we pray, trusting in your mercy; through Jesus Christ, our Savior.

**Amen.**

## PEACE

The peace of Christ be with you always.

**And also with you.**

*The people of God greet one another with a sign of Christ's peace and then sit.*

## Gift Giving

### SCRIPTURE READING: Matthew 2:10-11

<sup>10</sup>When the wise men saw that the star had stopped, they were overwhelmed with joy. <sup>11</sup>On entering the house, they saw the child with Mary his mother; and they knelt down and paid him homage. Then, opening their treasure chests, they offered him gifts of gold, frankincense, and myrrh.

Gift giving is an ancient practice. St. Nicholas, born in Asia Minor, used his wealth to help the needy with unexpected gifts. The biblical account of the wise men bringing gifts to the Christ child may also have been the origin of Christmas gift-giving. Christians all over the world embrace the birth of Jesus as God's most precious gift. Kindness and hospitality shown during this season are done out of our love for Christ and the love he has gifted us with. Jesus says, "Truly I tell you, just as you did it to one of the least of these who are members of my family, you did it to me." (Matthew 25:40)

## OFFERING

We are grateful for your gifts, and they are needed to continue the work of the church. For those worshipping online, options on ways to give are found on our website ([www.wbbethany.org](http://www.wbbethany.org)). Thank you! After the offering is gathered, the people of God stand and sing the hymn below as the gifts are brought forward.

## HYMN *We Are Waiting for Jesus* (All Creation Sings 905)



1 We are wait - ing for Je - sus; Je - sus brings peace.  
2 We are wait - ing for Je - sus; Je - sus brings peace.



We are wait - ing for Je - sus; Je - sus brings peace.  
We are wait - ing for Je - sus; Je - sus brings peace.



Sun of jus - tice, shine up - on us; we are trust - ing in your prom - ise.  
Lov - ing Shep - herd, walk be - side us; stir our hearts, and gent - ly guide us.



We are wait - ing for Je - sus; Je - sus brings peace.  
We are wait - ing for Je - sus; Je - sus brings peace.

Text: John Helgen, b. 1957  
Music: JESUS BRINGS PEACE, John Helgen  
Text and music © 2013 Augsburg Fortress

Duplication in any form prohibited without securing permission from copyright administrator or reporting usage under valid license.

## OFFERTORY PRAYER

Let us pray.

**Just as the Magi presented gifts of gold, frankincense, and myrrh to the new-born king, so also may our gifts be an offering of thanksgiving for the sending of your Son into the world to redeem us from our bondage to sin and death. During these four weeks of Advent, use us and the gifts we bring in sharing the good news of great joy through word and service in our community and in the world; for the sake of Jesus Christ. Amen.**

*The people of God sit.*

## The Nativity Scene

### SCRIPTURE READING: Luke 2:15

When the angels had left them and gone into heaven, the shepherds said to one another, "Let us go now to Bethlehem and see this thing that has taken place, which the Lord has made known to us."

*The Nativity is set up during the reading below.*

In the Middle Ages, when a few people could read, and the church services were in Latin, carved figures were used to tell Bible stories, especially the story of Jesus's birth, the Nativity. This scene bears many names; Nativity scene, Christmas manger, Manger scene, and Crèche, to name a few.

St. Francis of Assisi is given credit for popularizing the manger scene in 1224 when he used a cave outside a small Italian town and set up a manger scene with live animals and real people. Jesus, the Christ child, was life-size and was made of wax.



Our manger scenes today include camels - a common animal in the East. They are called "Ships of the Desert." The camel's presence reminds us of the wise men from the East who came seeking the Christ child.

### **HYMN *Away in a Manger* (ELW 277)**



1 A - way in a man - ger, no crib for his bed, the lit - tle Lord  
2 The cat - tle are low - ing; the ba - by a - wakes, but lit - tle Lord  
3 Be near me, Lord Je - sus; I ask you to stay close by me for -



Je - sus laid down his sweet head; the stars in the bright sky looked  
Je - sus, no cry - ing he makes. I love you, Lord Je - sus; look  
ev - er and love me, I pray. Bless all the dear chil - dren in



down where he lay, the lit - tle Lord Je - sus a - sleep on the hay.  
down from the sky and stay by my cra - dle till morn - ing is nigh.  
your ten - der care and fit us for heav - en, to live with you there.

### **Sending**

*The assembly stands*

### **LORD'S PRAYER**

Gathered into one by the Holy Spirit, let us pray as Jesus taught us.

**Our Father, who art in heaven,  
hallowed be thy name,  
thy kingdom come,  
thy will be done,  
on earth as it is in heaven.**

**Give us this day our daily bread;  
and forgive us our trespasses,**

**as we forgive those  
who trespass against us;  
and lead us not into temptation,  
but deliver us from evil.  
For thine is the kingdom,  
and the power, and the glory,  
forever and ever. Amen.**

The hour has come for us to wake from our slumber,

**because our salvation is nearer now than when we first believed,**

the night is nearly over; the day is almost here,

**so, let us put aside the deeds of darkness and put on the armor of light.** (Romans 13:11-12)

Let us pray.

Lord, creator of all there is - trees, flowers, and light - be with us through this Advent season as we wait with patience for the coming of the Christ child. As we have adorned this place of worship, let our hearts be adorned and shine with your everlasting light. We ask this in the name of Jesus, the babe of Bethlehem.

**Amen.**

### **BLESSING**

May Christ, the light of the world, shine upon you and scatter the darkness from before your path.

Almighty God, Father, † Son, and Holy Spirit, bless you now and forever.

**Amen.**

**SENDING HYMN *Joy to the World* (ELW 267)**



1 Joy to the world, the Lord is come! Let earth re -  
 2 Joy to the earth, the Sav - ior reigns! Let all their  
 3 No more let sin and sor - row grow nor thorns in -  
 4 He rules the world with truth and grace and makes the



ceive her king; let ev - 'ry heart pre - pare him  
 songs em - ploy, while fields and floods, rocks, hills, and  
 fest the ground; he comes to make his bless - ings  
 na - tions prove the glo - ries of his righ - teous -



room and heav'n and na - ture sing, and heav'n and na - ture  
 plains re - peat the sound - ing joy, re - peat the sound - ing  
 flow far as the curse is found, far as the curse is  
 ness and won - ders of his love, and won - ders of his



sing, and heav'n, and heav'n and na - ture sing.  
 joy, re - peat, re - peat the sound - ing joy.  
 found, far as, far as the curse is found.  
 love, and won - ders, won - ders of his love.

Go in peace. Prepare the way of the Lord.  
**Thanks be to God.**

*We invite you to join us for coffee, refreshments and fellowship  
 in the Great Hall downstairs following worship.*

**OUR WORSHIP ASSISTANTS**

Ministers of:	Today	December 8
<b>Music</b>	Jill Barnhart	Jill Barnhart
<b>Proclamation (Lector)</b>	Hanging of the greens	Jill Barnhart
<b>Minister of Technology</b>	Jill Taylor	Tate Frantz & Cole Crosthwaite
<b>Worship (Altar Care)</b>	Cindy Knoop & Stacy Beyers	Cindy Knoop & Stacy Beyers
<b>Ministers of Hospitality</b>	Kent & Beth Kaufman	Dave & Kami Poppen



Thanks to all assisting with preparing our space for the Advent and Christmas seasons.  
 Meaning of Christmas: Patsy Ernst  
 Advent Wreath: Fonseca family  
 Evergreens: Kinsinger family  
 Poinsettias: Stacy Beyer, Patsy Ernst  
 Christmas Tree: Heintz family  
 Gift Giving: Van Scoyoc families  
 Nativity: Michael & Michelle Sexton family



## 2024 Angel Tree

This year, Bethany Lutheran Church is supporting two families for the Angel Tree Program. The Sign-up Genius is below - please sign up for as many gifts as you would like. We would like to have all of the items collected at the church by December 13th. If you'd like to contribute but prefer not to shop, we welcome donations and will handle the shopping on your behalf. You can make a donation during the offering by designating it as an **Angel Tree contribution**. Thank you for your generosity and support!

Please contact Kami Poppen @dkpoppen@hotmail.com or (319) 471-3723 with any questions!

<https://www.signupgenius.com/go/10C0E4EAAA622ABF85-53538528-2024>"

### Children's Christmas Program

Sunday, December 15  
9:30 AM

*"Glory to God in the highest, And on earth peace, goodwill toward all!"*  
Luke 2:14

### Annual Cookie Walk

Saturday December 7th  
9:00 - 11:00 AM

### Christmas Eve Candlelight Worship

5:00 and 7:00 PM

5:00 PM streamed live on Facebook

### SUNDAY SCHOOL

December 1

December 8

December 15

**SUPPORT THE MANY  
MINISTRIES**  
BETHANY LUTHERAN CHURCH

1

**OFFERING PLATE**

Money can be placed in offering plate on Sunday morning or mailed to:  
Bethany Lutheran Church Box 236, West Branch, IA 52358.

2

**ON-LINE DONATIONS**



Scan QR code with your phone or visit our website <https://wbbethany.org>. Click on the blue "Give Now" button.

3

**AUTOMATIC WITHDRAWAL**

Sign up for the "Simply Giving" program for automatic withdrawals from your account. Contact [blcsecretary@lcom.net](mailto:blcsecretary@lcom.net)

4

**MOBILE APP**

Download the new Vanco Mobile App from your smartphone app store. Select Bethany Lutheran Church, West Branch, IA and make your donation.



5

**IRA CHARITABLE ROLLOVER**

Tax-free donation directly from an IRA to Bethany Lutheran Church  
This is a tax-free way to give your required minimum distributions from your IRA to charity.

**Are you looking for ways to donate your Required Minimum Distributions (RMD) from your retirement accounts - consider an IRA Charitable Rollover**

- Normally, when you take a distribution from a traditional IRA (not a Roth), you have to pay taxes on it because you didn't pay taxes on the money when you put it in the IRA.
- If you are 70 1/2 or older, you can make a charitable contribution from the IRA directly to a qualified charity (like a church) without having to treat it as a taxable distribution. The effect of this is to lower your adjusted gross distribution for tax purposes by the amount of the charitable contribution.
- Because you do not have to claim the amt of the donation as taxable income, you also do not claim the deduction on schedule A. This means you do not need to itemize your deductions in order to utilize this option.
- This option is particularly attractive if you are 72 and are required to make a minimum distribution. You can avoid taxes on it by donating it to a charity that you would otherwise donate directly to and avoid the taxes.
- To make a donation through your traditional IRA, assuming you are at least 70 1/2, you notify your IRA trustee and he or she will process the direct transfer to the charity. The IRA sends the check directly to the charity. The charity must provide a receipt stating that the donor received no goods or services in return for it.
- If you are interested in doing this, talk to your IRA custodian about how to do it and be sure to leave sufficient time for the funds to reach the charity in the year you want them to.

*There will be no Community Meal  
in December  
Merry Christmas!!*

Liturgy from sundaysandseasons.com. Copyright © 2020 Augsburg Fortress. All rights reserved. Used by permission of Augsburg Fortress under license # SB135727.  
*ELW 264 "Prepare the Royal Highway";* Text © 1978 *Lutheran Book of Worship*, admin. Augsburg Fortress. Used by permission under OneLicense.net A-726405 streaming license.  
*ELW 240 "Light One Candle to Watch for Messiah";* Text © 1984 Fortress Press, admin. Augsburg Fortress. Used by permission under OneLicense.net A-726405 streaming license.  
*ACS 905 We Are Waiting for Jesus;* Text & Music © 2013 Augsburg Fortress. Used by permission under OneLicense.net A-726405 streaming license.  
*ELW 263 "Savior of the Nations Come";* Text © 2006 Augsburg Fortress. Used by permission under OneLicense.net A-726405 streaming license.  
*ELW 751 "O Lord, Hear My Prayer";* Text and music © 1982, 1991 Les Presses de Taize, GIA Publications Inc. agent. Used by permission under OneLicense.net A-726405 streaming license.  
*ELW 257 "O Come, O Come, Emmanuel";* Text © 1997 Augsburg Fortress. Used by permission under OneLicense.net A-726405 streaming license.  
*New Revised Standard Version Bible*, Copyright © 1989, Division of Christian Education of the National Council of the Churches of Christ in the United States of America. Used by permission. All rights reserved.